

## 2008 ITAMA 40 – M/Y OKI



### Disclaimer:

Brokers present the particulars of this Vessel in good faith; however, they cannot guarantee or warrant the accuracy of this information, nor do they provide any assurances regarding the Vessel's condition. Images of the Vessel may be sourced from a catalogue. This document shall not, under any circumstances, be deemed a contractual term.

## 2008 ITAMA 40 – M/Y OKI



### Disclaimer:

Brokers present the particulars of this Vessel in good faith; however, they cannot guarantee or warrant the accuracy of this information, nor do they provide any assurances regarding the Vessel's condition. Images of the Vessel may be sourced from a catalogue. This document shall not, under any circumstances, be deemed a contractual term.

## 2008 ITAMA 40 – M/Y OKI



**Disclaimer:**

Brokers present the particulars of this Vessel in good faith; however, they cannot guarantee or warrant the accuracy of this information, nor do they provide any assurances regarding the Vessel's condition. Images of the Vessel may be sourced from a catalogue. This document shall not, under any circumstances, be deemed a contractual term.

## 2008 ITAMA 40 – M/Y OKI



### Disclaimer:

Brokers present the particulars of this Vessel in good faith; however, they cannot guarantee or warrant the accuracy of this information, nor do they provide any assurances regarding the Vessel's condition. Images of the Vessel may be sourced from a catalogue. This document shall not, under any circumstances, be deemed a contractual term.

## 2008 ITAMA 40 – M/Y OKI



### Disclaimer:

Brokers present the particulars of this Vessel in good faith; however, they cannot guarantee or warrant the accuracy of this information, nor do they provide any assurances regarding the Vessel's condition. Images of the Vessel may be sourced from a catalogue. This document shall not, under any circumstances, be deemed a contractual term.

## 2008 ITAMA 40 – M/Y OKI



### Disclaimer:

Brokers present the particulars of this Vessel in good faith; however, they cannot guarantee or warrant the accuracy of this information, nor do they provide any assurances regarding the Vessel's condition. Images of the Vessel may be sourced from a catalogue. This document shall not, under any circumstances, be deemed a contractual term.

## 2008 ITAMA 40 – M/Y OKI



### Disclaimer:

Brokers present the particulars of this Vessel in good faith; however, they cannot guarantee or warrant the accuracy of this information, nor do they provide any assurances regarding the Vessel's condition. Images of the Vessel may be sourced from a catalogue. This document shall not, under any circumstances, be deemed a contractual term.

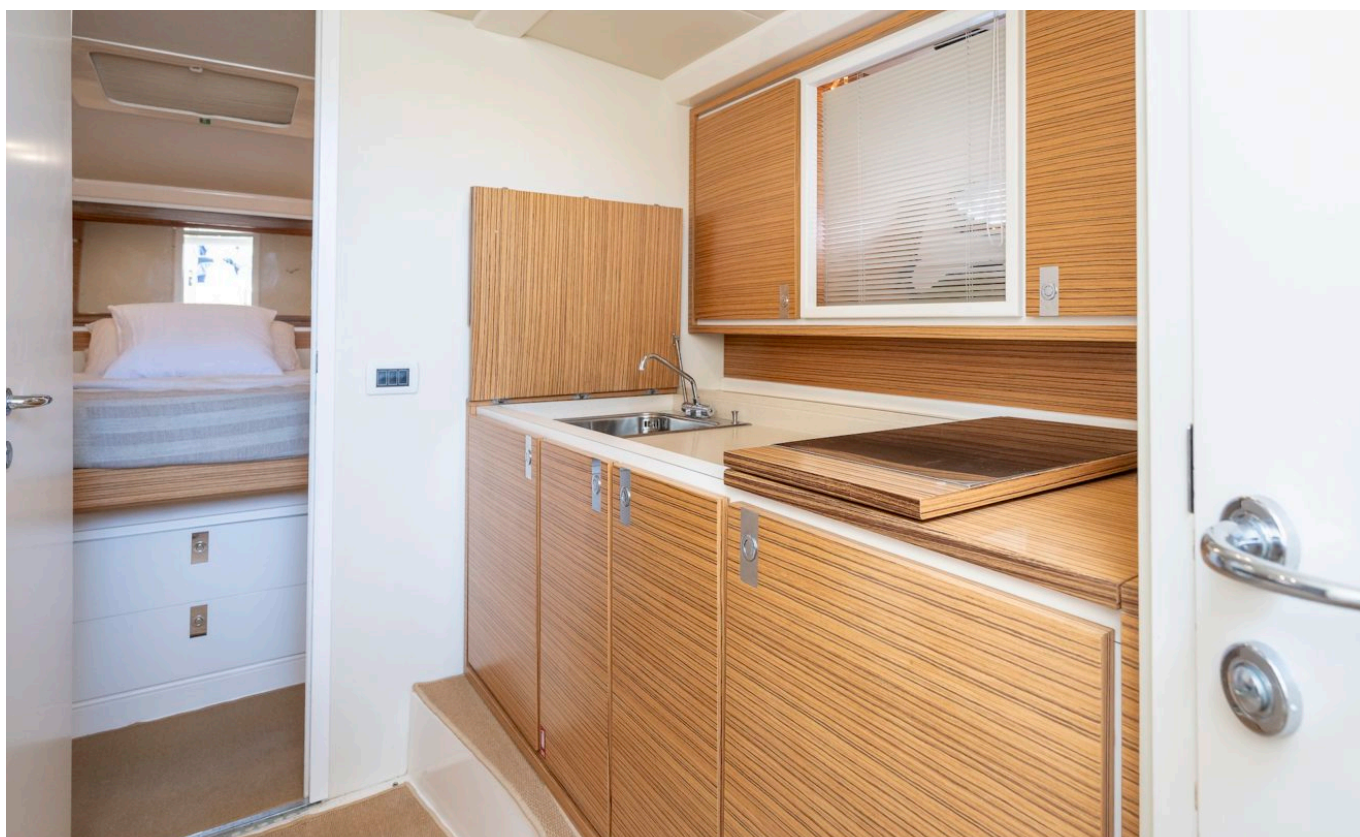
## 2008 ITAMA 40 – M/Y OKI



### Disclaimer:

Brokers present the particulars of this Vessel in good faith; however, they cannot guarantee or warrant the accuracy of this information, nor do they provide any assurances regarding the Vessel's condition. Images of the Vessel may be sourced from a catalogue. This document shall not, under any circumstances, be deemed a contractual term.

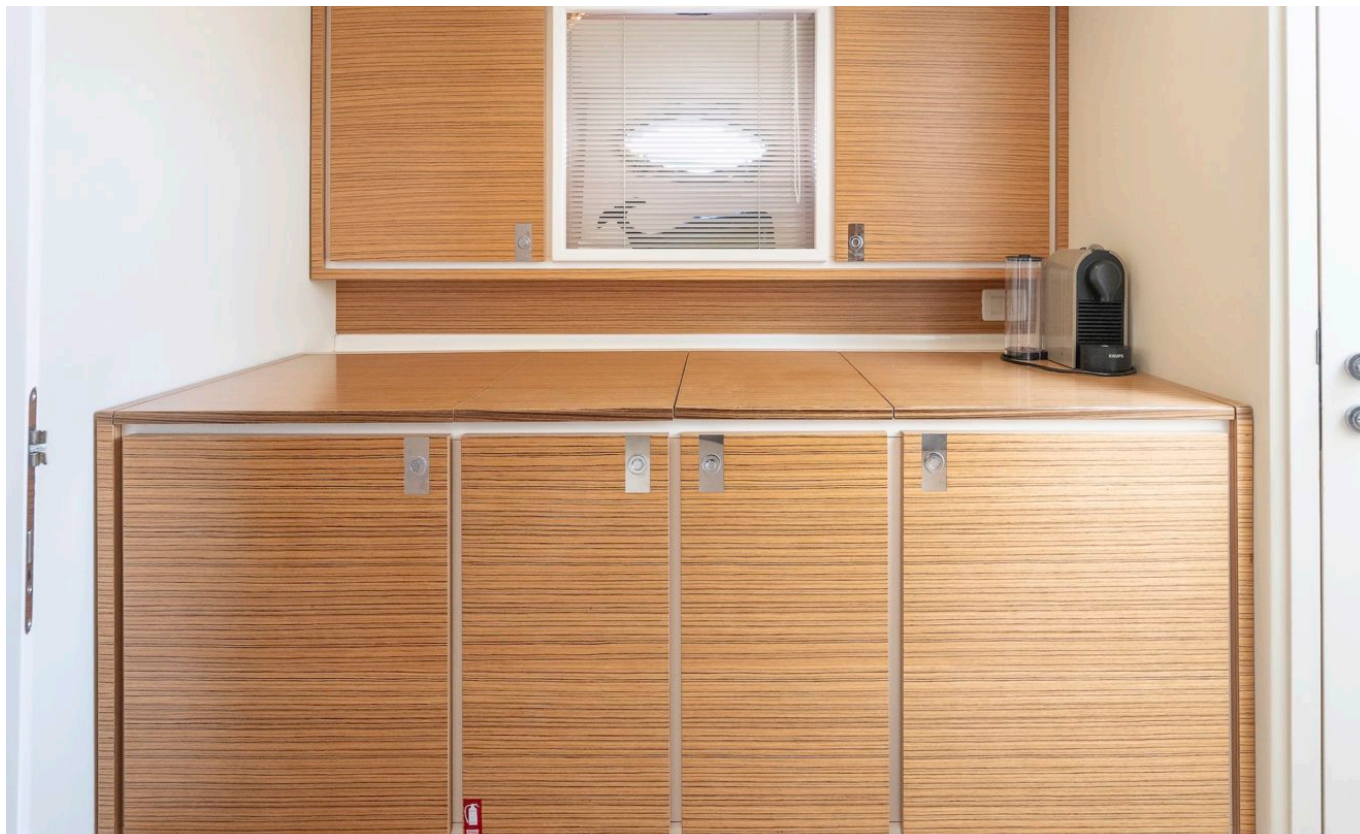
## 2008 ITAMA 40 – M/Y OKI



### Disclaimer:

Brokers present the particulars of this Vessel in good faith; however, they cannot guarantee or warrant the accuracy of this information, nor do they provide any assurances regarding the Vessel's condition. Images of the Vessel may be sourced from a catalogue. This document shall not, under any circumstances, be deemed a contractual term.

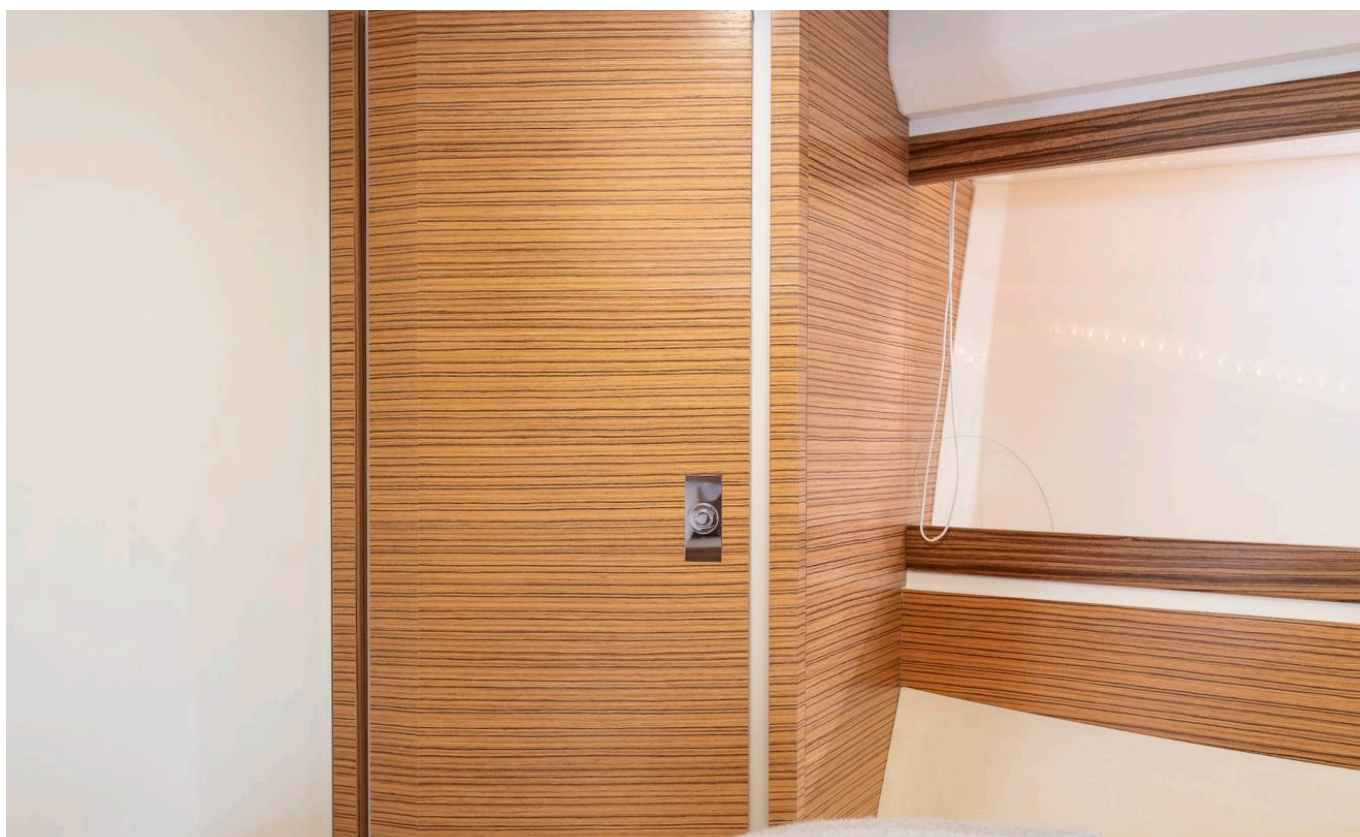
## 2008 ITAMA 40 – M/Y OKI



### Disclaimer:

Brokers present the particulars of this Vessel in good faith; however, they cannot guarantee or warrant the accuracy of this information, nor do they provide any assurances regarding the Vessel's condition. Images of the Vessel may be sourced from a catalogue. This document shall not, under any circumstances, be deemed a contractual term.

## 2008 ITAMA 40 – M/Y OKI



### Disclaimer:

Brokers present the particulars of this Vessel in good faith; however, they cannot guarantee or warrant the accuracy of this information, nor do they provide any assurances regarding the Vessel's condition. Images of the Vessel may be sourced from a catalogue. This document shall not, under any circumstances, be deemed a contractual term.

## 2008 ITAMA 40 – M/Y OKI



### **Disclaimer:**

Brokers present the particulars of this Vessel in good faith; however, they cannot guarantee or warrant the accuracy of this information, nor do they provide any assurances regarding the Vessel's condition. Images of the Vessel may be sourced from a catalogue. This document shall not, under any circumstances, be deemed a contractual term.