

2003 ASTONDOA 82' GLX – M/Y FOREVER



Disclaimer:

Brokers present the particulars of this Vessel in good faith; however, they cannot guarantee or warrant the accuracy of this information, nor do they provide any assurances regarding the Vessel's condition. Images of the Vessel may be sourced from a catalogue. This document shall not, under any circumstances, be deemed a contractual term.

2003 ASTONDOA 82' GLX – M/Y FOREVER



Disclaimer:

Brokers present the particulars of this Vessel in good faith; however, they cannot guarantee or warrant the accuracy of this information, nor do they provide any assurances regarding the Vessel's condition. Images of the Vessel may be sourced from a catalogue. This document shall not, under any circumstances, be deemed a contractual term.

2003 ASTONDOA 82' GLX – M/Y FOREVER



Disclaimer:

Brokers present the particulars of this Vessel in good faith; however, they cannot guarantee or warrant the accuracy of this information, nor do they provide any assurances regarding the Vessel's condition. Images of the Vessel may be sourced from a catalogue. This document shall not, under any circumstances, be deemed a contractual term.

2003 ASTONDOA 82' GLX – M/Y FOREVER



Disclaimer:

Brokers present the particulars of this Vessel in good faith; however, they cannot guarantee or warrant the accuracy of this information, nor do they provide any assurances regarding the Vessel's condition. Images of the Vessel may be sourced from a catalogue. This document shall not, under any circumstances, be deemed a contractual term.

2003 ASTONDOA 82' GLX – M/Y FOREVER



Disclaimer:

Brokers present the particulars of this Vessel in good faith; however, they cannot guarantee or warrant the accuracy of this information, nor do they provide any assurances regarding the Vessel's condition. Images of the Vessel may be sourced from a catalogue. This document shall not, under any circumstances, be deemed a contractual term.

2003 ASTONDOA 82' GLX – M/Y FOREVER



Disclaimer:

Brokers present the particulars of this Vessel in good faith; however, they cannot guarantee or warrant the accuracy of this information, nor do they provide any assurances regarding the Vessel's condition. Images of the Vessel may be sourced from a catalogue. This document shall not, under any circumstances, be deemed a contractual term.

2003 ASTONDOA 82' GLX – M/Y FOREVER



Disclaimer:

Brokers present the particulars of this Vessel in good faith; however, they cannot guarantee or warrant the accuracy of this information, nor do they provide any assurances regarding the Vessel's condition. Images of the Vessel may be sourced from a catalogue. This document shall not, under any circumstances, be deemed a contractual term.

2003 ASTONDOA 82' GLX – M/Y FOREVER



Disclaimer:

Brokers present the particulars of this Vessel in good faith; however, they cannot guarantee or warrant the accuracy of this information, nor do they provide any assurances regarding the Vessel's condition. Images of the Vessel may be sourced from a catalogue. This document shall not, under any circumstances, be deemed a contractual term.

2003 ASTONDOA 82' GLX – M/Y FOREVER



Disclaimer:

Brokers present the particulars of this Vessel in good faith; however, they cannot guarantee or warrant the accuracy of this information, nor do they provide any assurances regarding the Vessel's condition. Images of the Vessel may be sourced from a catalogue. This document shall not, under any circumstances, be deemed a contractual term.

2003 ASTONDOA 82' GLX – M/Y FOREVER



Disclaimer:

Brokers present the particulars of this Vessel in good faith; however, they cannot guarantee or warrant the accuracy of this information, nor do they provide any assurances regarding the Vessel's condition. Images of the Vessel may be sourced from a catalogue. This document shall not, under any circumstances, be deemed a contractual term.

2003 ASTONDOA 82' GLX – M/Y FOREVER



Disclaimer:

Brokers present the particulars of this Vessel in good faith; however, they cannot guarantee or warrant the accuracy of this information, nor do they provide any assurances regarding the Vessel's condition. Images of the Vessel may be sourced from a catalogue. This document shall not, under any circumstances, be deemed a contractual term.

2003 ASTONDOA 82' GLX – M/Y FOREVER



Disclaimer:

Brokers present the particulars of this Vessel in good faith; however, they cannot guarantee or warrant the accuracy of this information, nor do they provide any assurances regarding the Vessel's condition. Images of the Vessel may be sourced from a catalogue. This document shall not, under any circumstances, be deemed a contractual term.

2003 ASTONDOA 82' GLX – M/Y FOREVER



Disclaimer:

Brokers present the particulars of this Vessel in good faith; however, they cannot guarantee or warrant the accuracy of this information, nor do they provide any assurances regarding the Vessel's condition. Images of the Vessel may be sourced from a catalogue. This document shall not, under any circumstances, be deemed a contractual term.

2003 ASTONDOA 82' GLX – M/Y FOREVER



Disclaimer:

Brokers present the particulars of this Vessel in good faith; however, they cannot guarantee or warrant the accuracy of this information, nor do they provide any assurances regarding the Vessel's condition. Images of the Vessel may be sourced from a catalogue. This document shall not, under any circumstances, be deemed a contractual term.

2003 ASTONDOA 82' GLX – M/Y FOREVER



Disclaimer:

Brokers present the particulars of this Vessel in good faith; however, they cannot guarantee or warrant the accuracy of this information, nor do they provide any assurances regarding the Vessel's condition. Images of the Vessel may be sourced from a catalogue. This document shall not, under any circumstances, be deemed a contractual term.

2003 ASTONDOA 82' GLX – M/Y FOREVER



Disclaimer:

Brokers present the particulars of this Vessel in good faith; however, they cannot guarantee or warrant the accuracy of this information, nor do they provide any assurances regarding the Vessel's condition. Images of the Vessel may be sourced from a catalogue. This document shall not, under any circumstances, be deemed a contractual term.

2003 ASTONDOA 82' GLX – M/Y FOREVER



Disclaimer:

Brokers present the particulars of this Vessel in good faith; however, they cannot guarantee or warrant the accuracy of this information, nor do they provide any assurances regarding the Vessel's condition. Images of the Vessel may be sourced from a catalogue. This document shall not, under any circumstances, be deemed a contractual term.

2003 ASTONDOA 82' GLX – M/Y FOREVER



Disclaimer:

Brokers present the particulars of this Vessel in good faith; however, they cannot guarantee or warrant the accuracy of this information, nor do they provide any assurances regarding the Vessel's condition. Images of the Vessel may be sourced from a catalogue. This document shall not, under any circumstances, be deemed a contractual term.

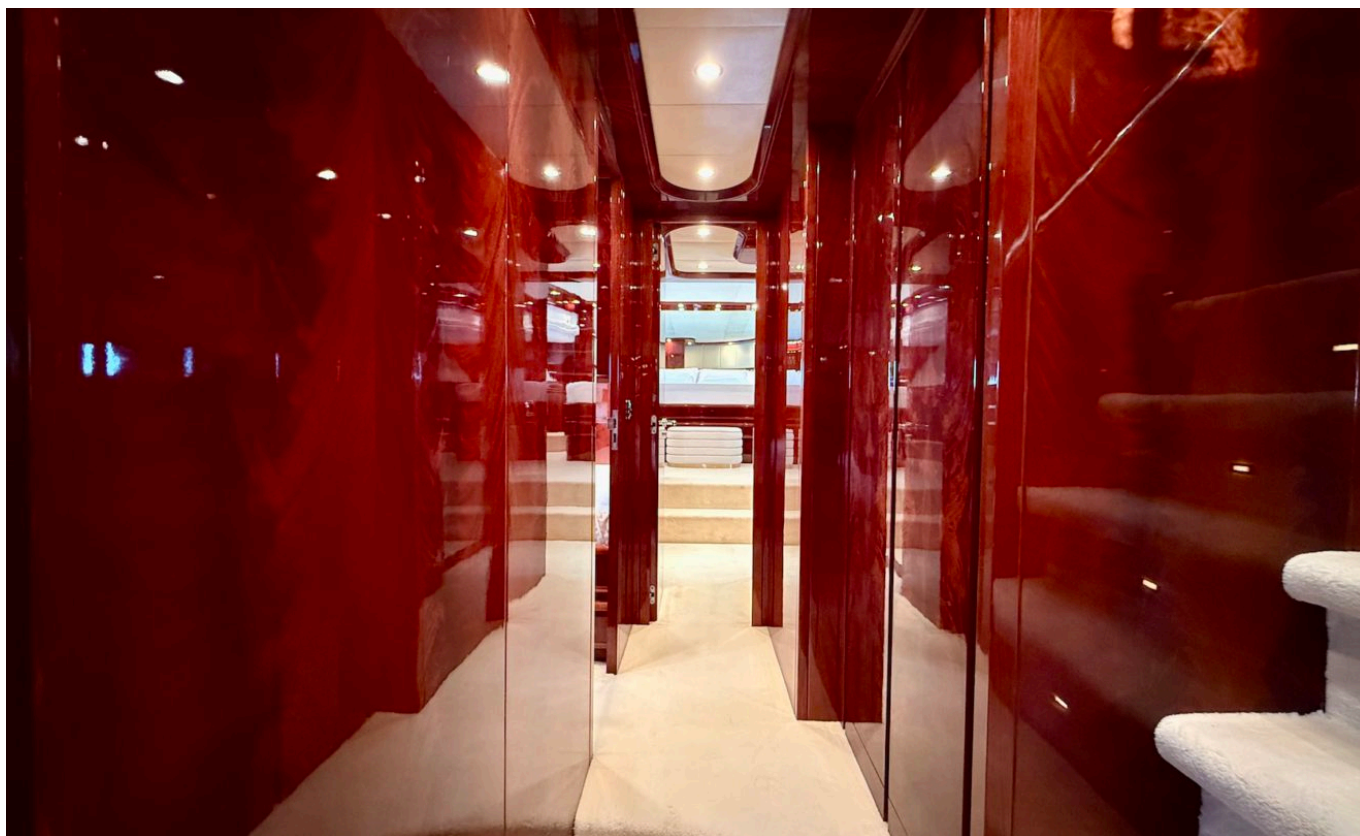
2003 ASTONDOA 82' GLX – M/Y FOREVER



Disclaimer:

Brokers present the particulars of this Vessel in good faith; however, they cannot guarantee or warrant the accuracy of this information, nor do they provide any assurances regarding the Vessel's condition. Images of the Vessel may be sourced from a catalogue. This document shall not, under any circumstances, be deemed a contractual term.

2003 ASTONDOA 82' GLX – M/Y FOREVER



Disclaimer:

Brokers present the particulars of this Vessel in good faith; however, they cannot guarantee or warrant the accuracy of this information, nor do they provide any assurances regarding the Vessel's condition. Images of the Vessel may be sourced from a catalogue. This document shall not, under any circumstances, be deemed a contractual term.

2003 ASTONDOA 82' GLX – M/Y FOREVER



Disclaimer:

Brokers present the particulars of this Vessel in good faith; however, they cannot guarantee or warrant the accuracy of this information, nor do they provide any assurances regarding the Vessel's condition. Images of the Vessel may be sourced from a catalogue. This document shall not, under any circumstances, be deemed a contractual term.

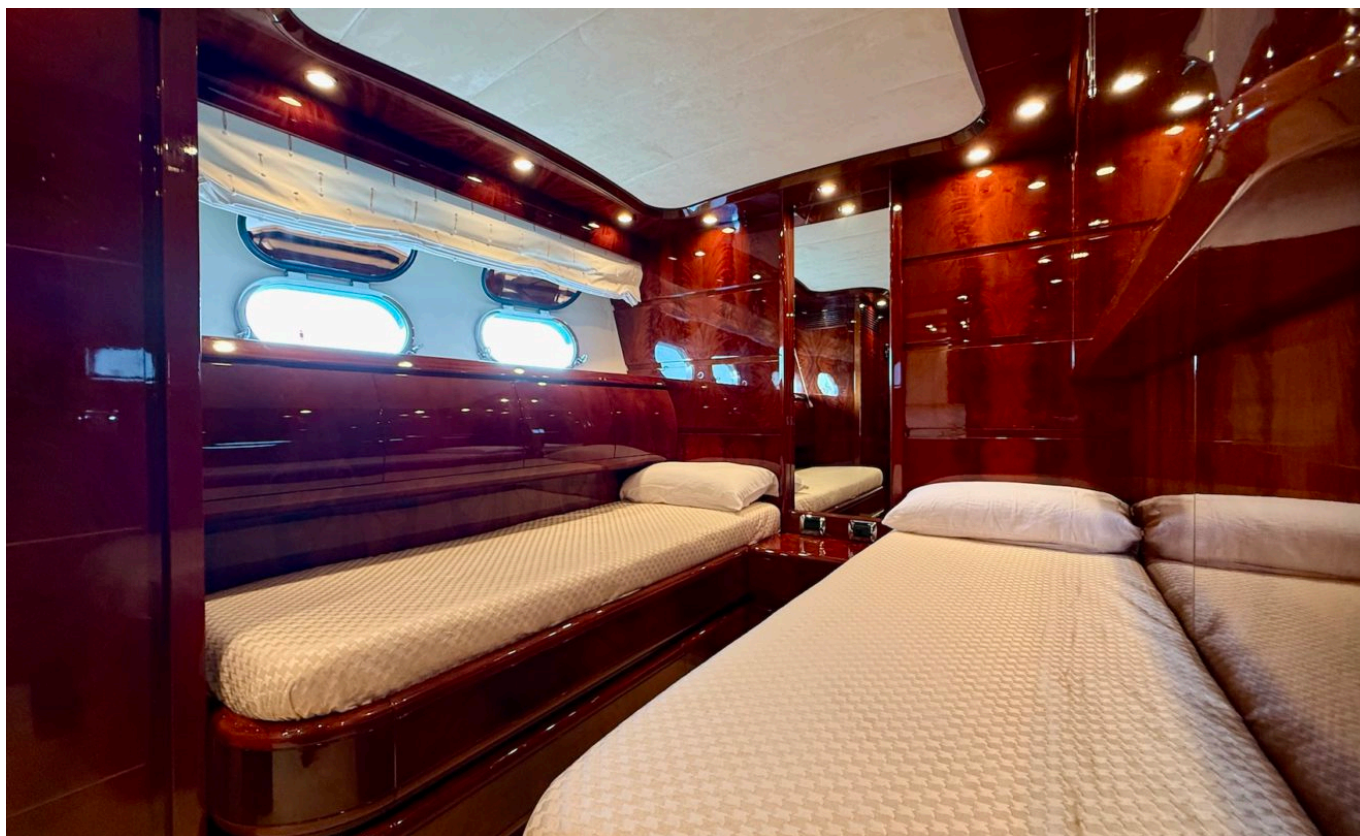
2003 ASTONDOA 82' GLX – M/Y FOREVER



Disclaimer:

Brokers present the particulars of this Vessel in good faith; however, they cannot guarantee or warrant the accuracy of this information, nor do they provide any assurances regarding the Vessel's condition. Images of the Vessel may be sourced from a catalogue. This document shall not, under any circumstances, be deemed a contractual term.

2003 ASTONDOA 82' GLX – M/Y FOREVER



Disclaimer:

Brokers present the particulars of this Vessel in good faith; however, they cannot guarantee or warrant the accuracy of this information, nor do they provide any assurances regarding the Vessel's condition. Images of the Vessel may be sourced from a catalogue. This document shall not, under any circumstances, be deemed a contractual term.

2003 ASTONDOA 82' GLX – M/Y FOREVER



Disclaimer:

Brokers present the particulars of this Vessel in good faith; however, they cannot guarantee or warrant the accuracy of this information, nor do they provide any assurances regarding the Vessel's condition. Images of the Vessel may be sourced from a catalogue. This document shall not, under any circumstances, be deemed a contractual term.