

2025 RIVA 48' DOLCERIVA – M/Y FOUR8



MAIN YACHT CHARACTERISTICS:

Boat Name:	FOUR8	Year:	2025
Builder/Make:	Riva	Model:	48' Dolceriva
Hull Number:	34	Type:	Motor Yacht
Length Overall:	48ft 11in 14.92m	Beam:	14ft 4.26m
		Draft:	4ft 10in 1.48m
Engine Make/Model:	2x VOLVO PENTA D13-1000	Engine horsepower:	2x 1000hp
Propulsion Type:	Shaft Drive	Fuel Type:	Diesel
Cruising Speed:	35 knots	Max Speed:	40 knots
Engine Hours:	New	Range:	220 nautical miles
Guest Cabins:	2	Crew Cabins:	0
Total Guests:	4	Total Crew:	0
Total Guest Toilets:	1	Crew Toilets:	0
On Display:	Ascona	Country:	Switzerland
Flag:	Swiss	Private/Commercial:	Private
Asking Price:	€ 1,950,000	Tax Status:	VAT Not Paid

Disclaimer:

Brokers present the particulars of this Vessel in good faith; however, they cannot guarantee or warrant the accuracy of this information, nor do they provide any assurances regarding the Vessel's condition. Images of the Vessel may be sourced from a catalogue. This document shall not, under any circumstances, be deemed a contractual term.

2025 RIVA 48' DOLCERIVA – M/Y FOUR8

TECHNICAL CHARACTERISTICS:

RCD / CE Category:	B - Offshore	Classifying Body:	RINA
Main Generator:	ONAN 11 kW 50 Hz	2nd Generator:	/
Hours:	New	Hours:	/
Fuel Tank:	1800 lt 476 gal	Water Tank:	310 lt 82 gal
Black Tank:	120 lt 31 gal	Grey Tank:	120 lt 31 gal
Stabiliser:	Seakeeper NG6	Bow Thruster:	Yes
Air Conditioning:	Super Tropic		

YACHT DESCRIPTION:

Architect:	Officina Italiana Design	Material:	GRP
Internal Furniture:	Glossy Mahogany Timber	External Hull Colour:	Regal Silver

M/Y FOUR8 is hull no. 34 and a beautifully specified Riva 48' Dolceriva delivered in 2025, combining classic Riva elegance with a distinctly modern character. Finished in Regal Silver with contrasting black detailing and mahogany decking, she presents one of the most recognisable silhouettes in her category. Powered by twin Volvo Penta D13 1000 engines with shaft drives, she delivers strong performance together with straightforward handling through joystick control and Active Ride technology. Her glossy mahogany interior and carefully selected finishes create a refined onboard atmosphere, while the upgraded specification enhances both comfort and day-to-day usability throughout the yacht.

LAYOUT:

The layout has been configured in the highly desirable two-cabin version, creating generous volume and a more open atmosphere below deck. The forward owner's cabin offers a calm and refined space with en-suite bathroom access, while the guest cabin features twin beds and additional storage. The lower dinette and galley are arranged centrally, providing a comfortable interior living area connected naturally to the cockpit above. Exterior circulation is simple and elegant, with large aft sunpads, opposing cockpit seating and a central teak walkway reinforcing the yacht's social layout. The overall arrangement balances practicality, comfort and the unmistakable character of a modern Riva.

BROKER COMMENTS:

M/Y FOUR8 combines Riva's timeless styling with a highly desirable specification, delivering elegant day boating, strong performance and immediate turnkey usability in one of the market's most iconic segments.

Disclaimer:

Brokers present the particulars of this Vessel in good faith; however, they cannot guarantee or warrant the accuracy of this information, nor do they provide any assurances regarding the Vessel's condition. Images of the Vessel may be sourced from a catalogue. This document shall not, under any circumstances, be deemed a contractual term.

2025 RIVA 48' DOLCERIVA – M/Y FOUR8

SPECIFICATION:

EQUIPMENT:

General:

Regal Silver metallic hull finish
Mahogany deck finish
2-cabin layout

External:

Teak cockpit with black caulking
Side underwater lights
Underwater lights on transom
Additional stern electric mooring winch
Cockpit upholstery in ItalVipla Tropical White
Full exterior protective cover package
Large aft sunpad configuration

Internal:

Glossy mahogany interior timber
Electric Venetian blinds for lower deck
Leather interior upholstery – Caramello colour
White leather saloon sofa
Dimmer lighting system (interior and exterior)

Technical:

11 kW Onan generator upgrade
Seakeeper NG6 gyro stabiliser
Joystick manoeuvring system with proportional bow thruster
Autotrim ATCS with Active Ride function
Super Tropic air conditioning
12V generator battery charger
2500VA inverter TV/Hi-Fi 24-220V

NAVIGATION:

Additional 16" monitor at helm
Integrated Volvo joystick control system
Active Ride automatic trim control

AUDIO VISUAL:

43" TV in dinette
Apple TV integration
High-quality loudspeaker system
Additional cockpit loudspeakers

DOMESTIC:

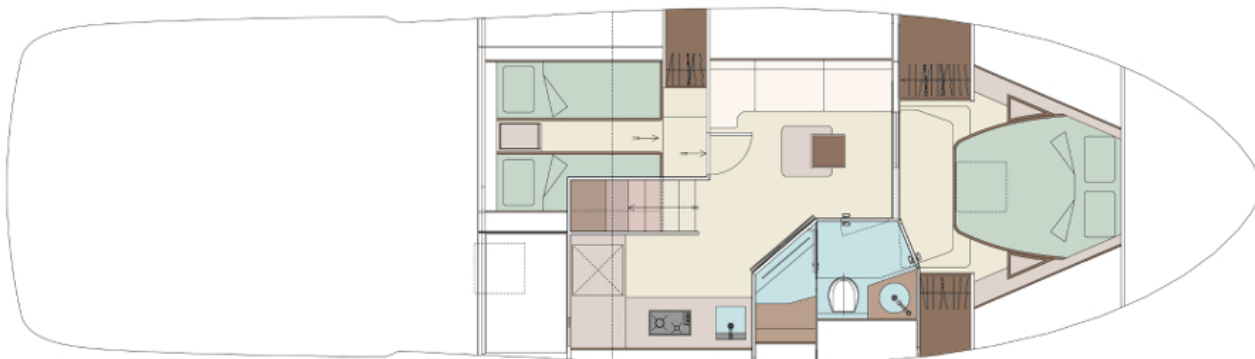
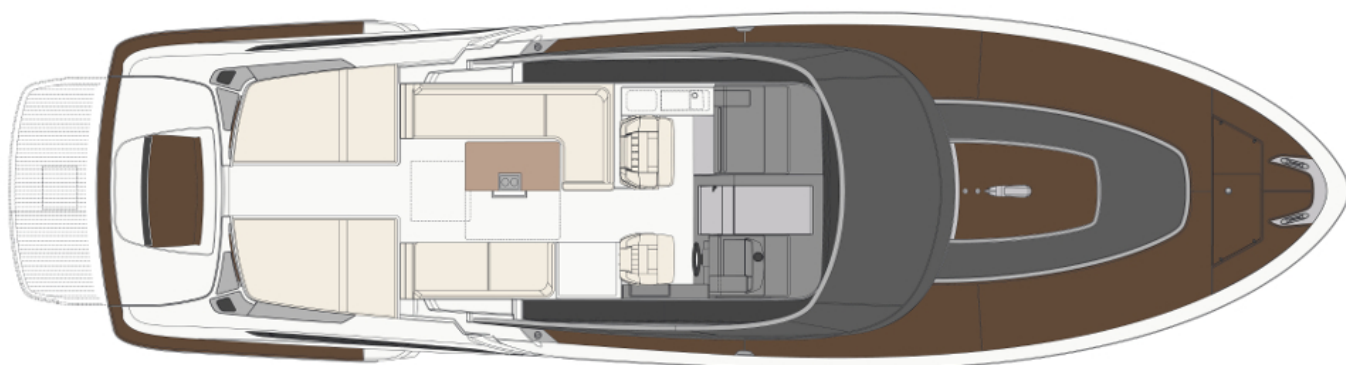
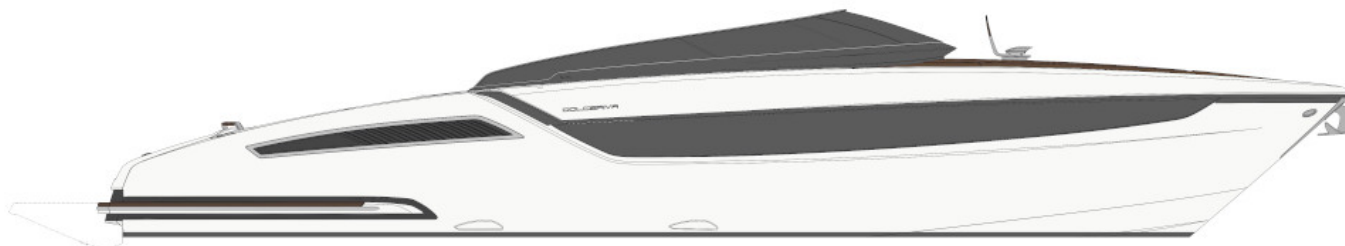
Super Tropic air conditioning system
Lower deck Venetian blind package

Disclaimer:

Brokers present the particulars of this Vessel in good faith; however, they cannot guarantee or warrant the accuracy of this information, nor do they provide any assurances regarding the Vessel's condition. Images of the Vessel may be sourced from a catalogue. This document shall not, under any circumstances, be deemed a contractual term.

2025 RIVA 48' DOLCERIVA – M/Y FOUR8

LAYOUT:



Disclaimer:

Brokers present the particulars of this Vessel in good faith; however, they cannot guarantee or warrant the accuracy of this information, nor do they provide any assurances regarding the Vessel's condition. Images of the Vessel may be sourced from a catalogue. This document shall not, under any circumstances, be deemed a contractual term.