

## 2021 RIVA DOLCERIVA – M/Y STJ



### MAIN YACHT CHARACTERISTICS:

<b>Boat Name:</b>	STJ	<b>Year:</b>	2021
<b>Builder/Make:</b>	Riva	<b>Model:</b>	Dolceriva
<b>Hull Number:</b>	N/A	<b>Type:</b>	Motor Yacht
<b>Length Overall:</b>	48ft 9in 14.92m	<b>Beam:</b>	13ft 9in 4.26m
		<b>Draft:</b>	4ft 85in 1.48m
<b>Engine Make/Model:</b>	2x VOLVO D13-1000	<b>Engine horsepower:</b>	2x 1000hp
<b>Propulsion Type:</b>	V Drive	<b>Fuel Type:</b>	Diesel
<b>Cruising Speed:</b>	35 knots	<b>Max Speed:</b>	40 knots
<b>Engine Hours:</b>	248	<b>Range:</b>	220 nautical miles
<b>Guest Cabins:</b>	2	<b>Crew Cabins:</b>	0
<b>Total Guests:</b>	4	<b>Total Crew:</b>	0
<b>Total Guest Toilets:</b>	1	<b>Crew Toilets:</b>	0
<b>On Display:</b>	Athens	<b>Country:</b>	Greece
<b>Flag:</b>	Jersey	<b>Private/Commercial:</b>	Private
<b>Asking Price:</b>	€ 1,150,000	<b>Tax Status:</b>	VAT Not Paid

#### Disclaimer:

Brokers present the particulars of this Vessel in good faith; however, they cannot guarantee or warrant the accuracy of this information, nor do they provide any assurances regarding the Vessel's condition. Images of the Vessel may be sourced from a catalogue. This document shall not, under any circumstances, be deemed a contractual term.

## 2021 RIVA DOLCERIVA – M/Y STJ

### TECHNICAL CHARACTERISTICS:

<b>RCD / CE Category:</b>	B - Offshore	<b>Classifying Body:</b>	RINA
<b>Main Generator:</b>	ONAN 11kW 50Hz	<b>2nd Generator:</b>	/
<b>Hours:</b>	N/A	<b>Hours:</b>	/
<b>Fuel Tank:</b>	1800 lt 475 gal	<b>Water Tank:</b>	310 lt 82 gal
<b>Black Tank:</b>	120 lt 32 gal	<b>Grey Tank:</b>	/ lt / gal
<b>Stabiliser(s):</b>	Seakeeper NG6	<b>Bow thruster:</b>	Yes (plus Joystick)
<b>Air conditioning:</b>	Super Tropic		

### YACHT DESCRIPTION:

<b>Architect:</b>	Officina Italiana Design	<b>Material:</b>	GRP
<b>Internal Furniture:</b>	Glossy Mahogany Timber	<b>External Hull Colour:</b>	Metallic Regal Silver

The Dolceriva is one of those rare boats that immediately feels right the moment you step on board. Effortlessly elegant, she carries the unmistakable Riva DNA, combining clean lines with a strong, confident presence on the water. Performance is equally satisfying, with smooth acceleration and a fast, comfortable cruising pace that makes every trip enjoyable. She is not about excess, but about balance—style, speed and usability coming together in a very natural way. Whether used for relaxed coastal cruising or spontaneous day trips, she delivers a refined, uncomplicated experience that is easy to appreciate and even easier to enjoy.

### LAYOUT:

The layout is simple, open and very well thought through, making the most of every space on board. The cockpit is the focal point, offering generous seating, sunbathing areas and a natural flow between lounging and helm positions. Everything feels accessible and easy to move around, whether underway or at anchor. Below deck, the atmosphere shifts to something more intimate, with a comfortable cabin, bathroom and practical storage for short stays. It's a layout that prioritises ease of use and enjoyment, perfectly aligned with the boat's purpose—spending time on the water without complication, in complete comfort.

### BROKER COMMENTS:

This Dolceriva is one of those boats that simply works—effortlessly stylish, fast when you want it, and always a pleasure to use. A very easy yacht to fall for.

#### Disclaimer:

Brokers present the particulars of this Vessel in good faith; however, they cannot guarantee or warrant the accuracy of this information, nor do they provide any assurances regarding the Vessel's condition. Images of the Vessel may be sourced from a catalogue. This document shall not, under any circumstances, be deemed a contractual term.

## 2021 RIVA DOLCERIVA – M/Y STJ

### SPECIFICATION:

#### EQUIPMENT:

##### General:

Metallic colour Regal Silver (waterline Bright Black & turquoise)  
Glossy mahogany interior timber (2-cabin version)  
Maple-seamed mahogany cockpit and walkway (antislip/gloss varnish)  
Carpet upgrade (grey colour)  
Transport hood

##### External:

Bow handrails in mahogany and stainless steel  
Additional stern electric mooring winch  
Side underwater lights  
Underwater lights on transom

##### Internal:

Glossy mahogany interior (2-cabin layout)

##### Technical:

Seakeeper NG6 gyro stabiliser  
Upgraded generator ONAN 11 kW (50Hz)  
Generator battery charger 12V  
Super tropical air conditioning  
Inverter  
Volvo joystick with proportional bow thruster  
Autotrim ATCS with Active Ride system

##### NAVIGATION:

Additional 16" monitor

##### AUDIO VISUAL:

TV 43" in dinette  
High-quality loudspeakers  
Apple TV  
Additional cockpit speakers

##### DOMESTIC:

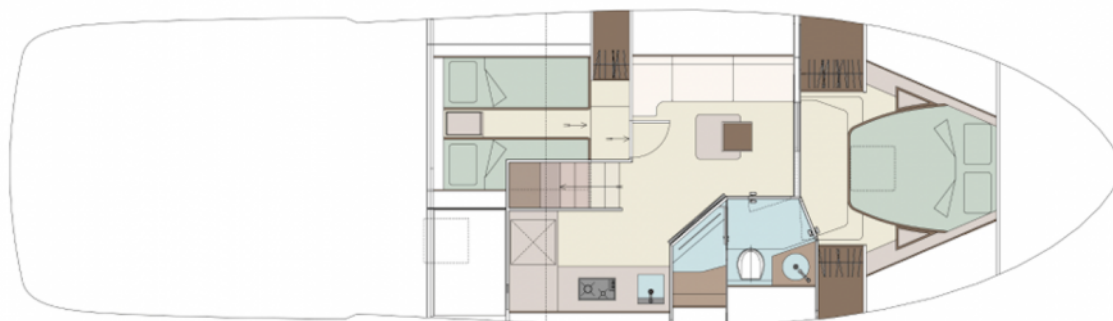
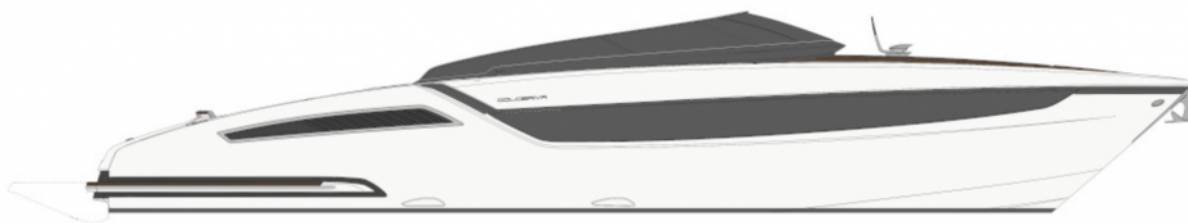
Ice maker in dinette  
Dishwasher in dinette

##### Disclaimer:

Brokers present the particulars of this Vessel in good faith; however, they cannot guarantee or warrant the accuracy of this information, nor do they provide any assurances regarding the Vessel's condition. Images of the Vessel may be sourced from a catalogue. This document shall not, under any circumstances, be deemed a contractual term.

## 2021 RIVA DOLCERIVA – M/Y STJ

### LAYOUT:



#### Disclaimer:

Brokers present the particulars of this Vessel in good faith; however, they cannot guarantee or warrant the accuracy of this information, nor do they provide any assurances regarding the Vessel's condition. Images of the Vessel may be sourced from a catalogue. This document shall not, under any circumstances, be deemed a contractual term.