

BANDIDO 90



“BANDIDO”

Built by Jade Yachts in 2007/2008 steel hull with bulb and aluminium superstructure. 5 double cabins all ensuite and 2 double crew cabins. Enormous spaces for comfortable living and entertaining.

YEAR	:	2007/2008
L.O.A.	:	27.90 m
BEAM	:	7.50 m
DRAFT	:	2.40 m
WEIGHT	:	227 ton
DIESEL	:	38.000 litres
WATER	:	6.780 litres
ENGINES	:	2 x 1050 MAN LE242LE410
HOURS	:	6.200 (March 2025)
FLAG	:	Portugal
LYING	:	South of Spain
PRICE	:	€3.950.000 + Vat if applicable

All particulars are believed to be correct, but not guaranteed.

BANDIDO 90

CONSTRUCTION:

Hull : Steel
Superstructure : Aluminium

SPEED & RANGE:

Cruise speed: 10 knots
Max speed: 12 knots
Range at cruise: 2900 miles
Range at 8 knots: 4900 miles

LAYOUT:

Accommodation for 11 guests in 5 cabins all ensuite plus 2 double crew cabins. Main cabin on main deck full beam with large bed, walk in wardrobe and bathroom, 2nd main cabin on upper deck and complete bathroom and access direct to aft upper deck, lower deck 3 cabins (one can be used for crew if wanted with direct access to crew mess. Crew layout with crew mess with large sofa and table, 2 double cabins. Large saloon and dining area next to completely equipped galley. Day head. Top sun deck with large wet bar, seating with table and sunbathing area. On aft deck there is a jacuzzi built in.

NAVIGATION:

2 x Radar open array antenna 64 miles
GPS antenna
3 displays for navigation in wheel house Simrad Evo 2 and other Simrad Evo 3 for radar, plotter, depth etc.
Display Navionics for navigating on flybridge helm station
2 displays Boening 16" computer for onboard management, doors, grey, black water, alarms etc

All particulars are believed to be correct, but not guaranteed.

BANDIDO 90

Cont.

Autopilot AP50 with repeater on fly helm and emergency autopilot Simrad FU50

Radio VHF Sailor RT5022 DSC

Radio VHF onda corta HC4500B

Radio VHF Simrad HS100 DSC

Tridata Depth and Wind indicator

Rudder angle indicator

Simrad HS52 compass gyroscopic

CCTV display at helm with moveable camera at stern and cameras in engine room and garage

Navtex nav7 mc Murdo

Centralized fire system Consilium

AIS

Epirb

Electronic engine controls

EQUIPMENT:

Hard top ceiling on upper sun deck

Air conditioning Marine Air throughout

2 x Generator 50KW Onan (16.150 hours March 2025)

Fin stabilizers for navigating and zero speed AB TRAC 370 (new 2016)

Teak decks all decks

Alfa Laval fuel treatment system

Mini Hamann for black water

Hydraulic gangway

Watermaker x 2 Idromar MJ2 and MJ3

2 water heaters

2 x anchor winch Maxwell 6000 with chain 75m 19mm and 16mm (new 2024 and 2025) and anchor 120kg each

Stern mooring winches Maxwell 4000

Jacuzzi on aft deck

Electric wc with black water tank system

Inverter

All particulars are believed to be correct, but not guaranteed.

BANDIDO 90

Cont.

Shore power with Glendening cable master and battery chargers (2 for services and 2 for engine batteries)

2 10p Liferrafts

Tender Williams 385 Jet in aft garage

Jet ski Seadoo 300 RXP in aft garage

AUDIO VISUAL:

Upgraded WIFI system supplying sound to saloon, aft deck, upper deck and sun deck through Bluetooth.

Satelite TV antenna with std decoder in saloon

Connections for sat antenna in cabins (no decoders)

Stereo radio CD Bose in saloon with speakers in saloon, aft deck, upper deck and main cabin

Stereo radio CD Bose in upper deck cabin with speakers in cabin, upper deck and sun deck

TV Smart 42" LG flat screen with electric raising device in saloon

TV Smart flat screen in main cabin and cabin on upper deck

TV Smart flat screen connected to boats wifi in crew mess

DOMESTIC:

Fridge x2 Siemens

Freezer Siemens

Ceramic Siemens 90cm hob with extractor

Oven and micro wave oven Siemens

Dishwasher Bosch

Cutlery, plates, glasses various types etc. full set

Set of plates, glasses and cutlery

Washing machine in crew mess

Drier in wetbar on sun deck

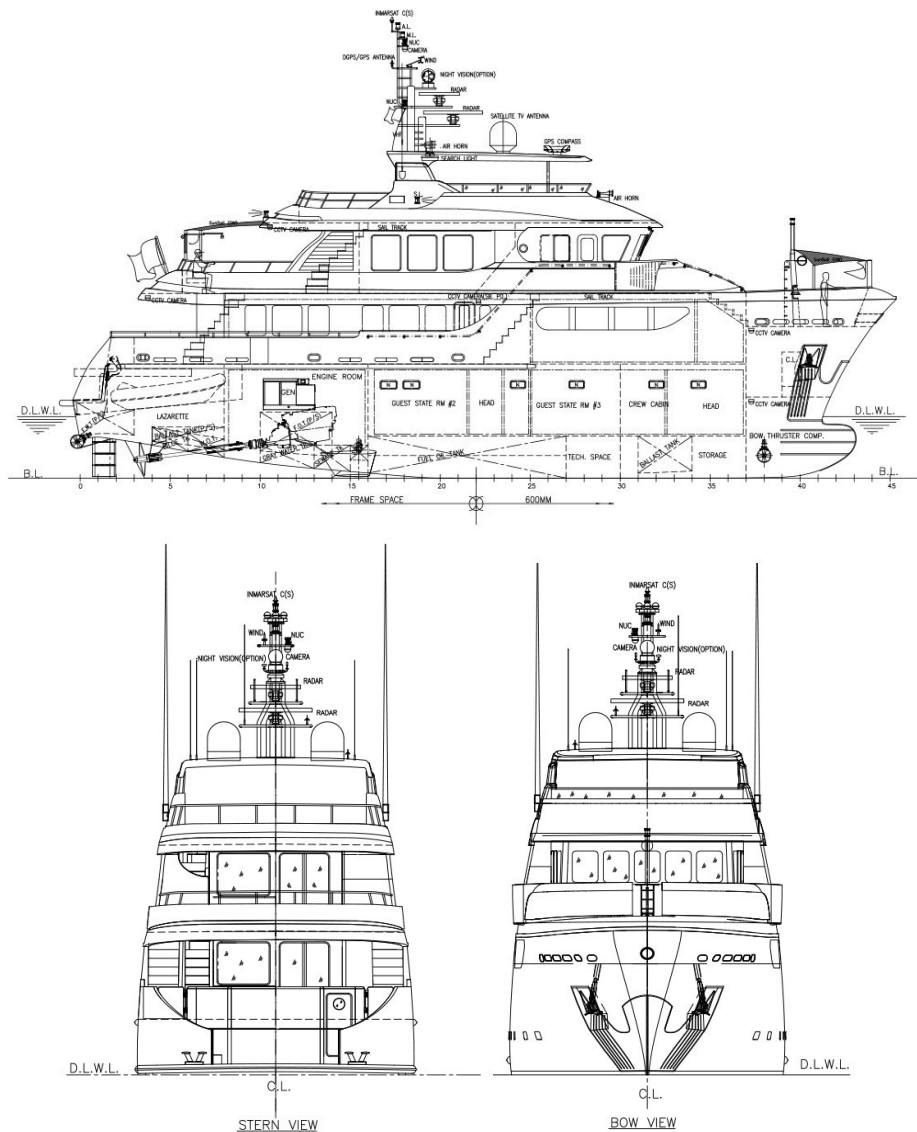
Wet bar on fly with sink, wine fridge and freezer

All particulars are believed to be correct, but not guaranteed.

BANDIDO 90

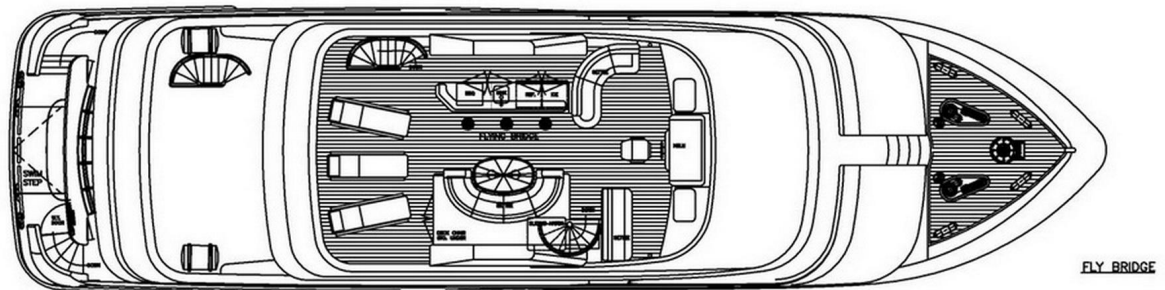
NOTE:

Refit done 2016 in Varadero Denia;
Full paint of boat
Conversion of upper deck saloon to 2nd main cabin with bathroom
New fin stabilizers installed

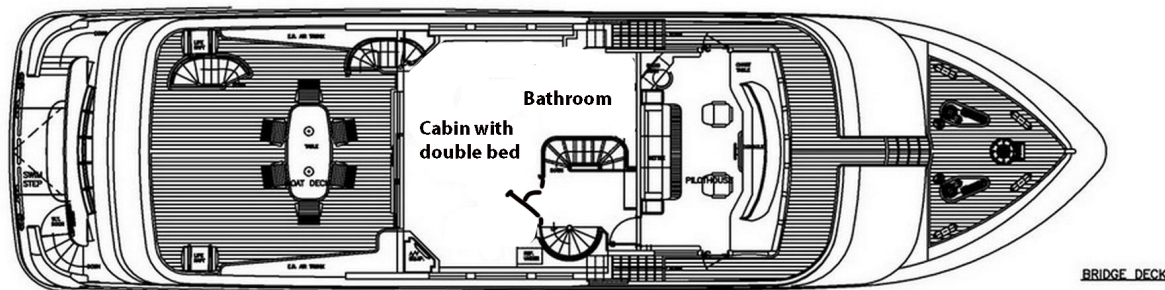


All particulars are believed to be correct, but not guaranteed.

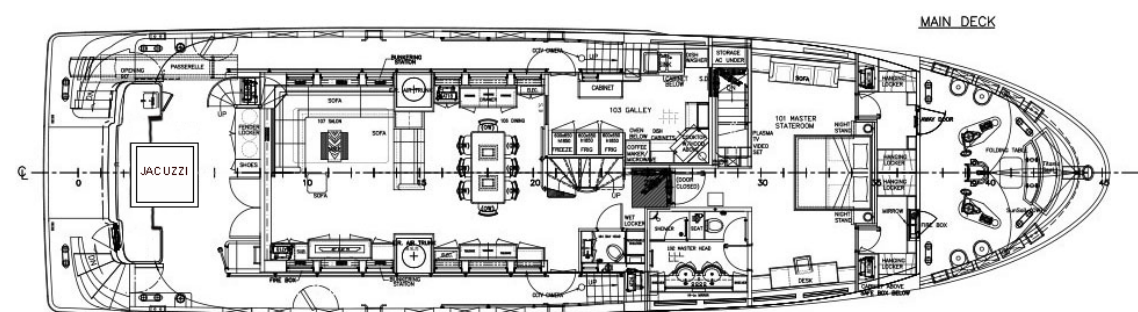
BANDIDO 90



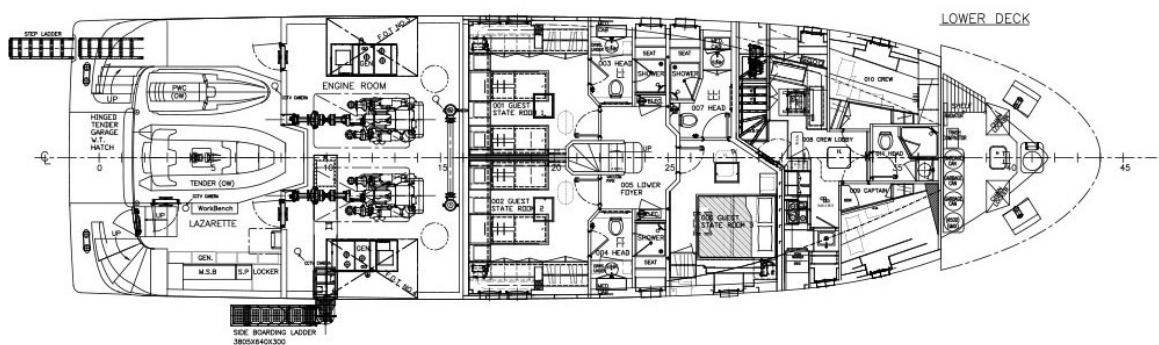
FLY BRIDGE



BRIDGE DECK



MAIN DECK



LOWER DECK

All particulars are believed to be correct, but not guaranteed.