

2007 JADE YACHTS BANDIDO 90' – M/Y BANDIDO



MAIN YACHT CHARACTERISTICS:

Boat Name:	BANDIDO	Year:	2007
Builder/Make:	Jade Yachts	Model:	Bandido 90'
Hull Number:	104	Type:	Motor Yacht
Length Overall:	91ft 5in 27.90m	Beam:	24ft 6in 7.50m
		Draft:	7ft 9in 2.40m
Engine Make/Model:	2x MAN LE242 LE410	Engine horsepower:	2x 1050hp
Propulsion Type:	Shaft Drive	Fuel Type:	Diesel
Cruising Speed:	10 knots	Max Speed:	12 knots
Engine Hours:	6200	Range:	2900 nautical miles
Guest Cabins:	5	Crew Cabins:	2
Total Guests:	9	Total Crew:	4
Total Guest Toilets:	5	Crew Toilets:	1
On Display:	South of Spain	Country:	Spain
Flag:	Portuguese	Private/Commercial:	Private
Asking Price:	€ 3,300,000	Tax Status:	VAT Not Paid

Disclaimer:

Brokers present the particulars of this Vessel in good faith; however, they cannot guarantee or warrant the accuracy of this information, nor do they provide any assurances regarding the Vessel's condition. Images of the Vessel may be sourced from a catalogue. This document shall not, under any circumstances, be deemed a contractual term.

2007 JADE YACHTS BANDIDO 90' – M/Y BANDIDO

TECHNICAL CHARACTERISTICS:

RCD / CE Category:	A - Ocean	Classifying Body:	N/A
Main Generator:	Onan 50kW	2nd Generator:	Onan 50kW
Hours:	16150	Hours:	N/A
Fuel Tank:	38000 lt 10038 gal	Water Tank:	6780 lt 1791 gal
Black Tank:	1150 lt 304 gal	Grey Tank:	940 lt 248 gal
Stabiliser Fins:	Cero-Speed AB TRAC 370	Bow thruster:	Yes
Stern thruster:	Yes	Air conditioning:	Yes

YACHT DESCRIPTION:

Architect:	Jade Yachts Engineering Team	Material:	STEEL
Internal Furniture:	N/A	External Hull Colour:	White

M/Y BANDIDO, built by Jade Yachts in 2007 and launched in 2008, is a 27.90m luxury yacht based in Southern Spain under the Portuguese flag. With a steel hull and aluminium superstructure, it accommodates nine guests in five ensuite cabins and four crew members in two cabins. It features a main cabin on the main deck, another on the upper deck and entertainment amenities like a smart TV and Bose sound systems. Equipped with Simrad navigation, twin Idromar watermakers and a jacuzzi, it ensures a comfortable journey. A 2016 refit included exterior repainting, stabilizer upgrades and an upper deck conversion.

LAYOUT:

The layout offers flexible accommodation for both private and crewed operation. The owner's suite is located on the main deck, while a second full-beam master cabin is positioned on the upper deck. The lower deck comprises two VIP guest cabins and an additional cabin that can be configured either as guest accommodation or as a captain's cabin. In its standard configuration, the yacht accommodates up to nine guests across five en-suite cabins. Alternatively, when the additional lower-deck cabin is allocated to the captain, the layout provides four guest cabins together with three crew cabins. The dedicated crew area aft includes two crew cabins with two single berths each, supported by two crew bathrooms.

BROKER COMMENTS:

BANDIDO represents a rare opportunity in the sub-30m explorer segment, offering steel construction, long-range capability and genuine volume. For buyers seeking autonomy and Mediterranean readiness without moving into larger superyacht territory, BANDIDO is a compelling and intelligently priced option.

Disclaimer:

Brokers present the particulars of this Vessel in good faith; however, they cannot guarantee or warrant the accuracy of this information, nor do they provide any assurances regarding the Vessel's condition. Images of the Vessel may be sourced from a catalogue. This document shall not, under any circumstances, be deemed a contractual term.

2007 JADE YACHTS BANDIDO 90' – M/Y BANDIDO

SPECIFICATION:

EQUIPMENT:

General:

Hard top ceiling on upper sun deck
Teak decks all decks

External:

Hydraulic gangway
2 x anchor winch Maxwell 6000 with chain 75m, 19mm, 16mm (new 2024/25) and anchor 120kg each
Stern mooring winches Maxwell
4000 Jacuzzi on aft deck
2 10p Liferrafts

Internal:

Electric wc with black water tank system

Technical:

Air conditioning Marine Air throughout
2 x Generator 50KW Onan (16.150 hours March 2025)
Fin stabilizers for navigating and zero speed AB TRAC 370 (new 2016)
Alfa Laval fuel treatment system
Mini Hamann for black water
Watermaker x 2 Idromar MJ2 and MJ3
2 water heaters
Inverter
Shore power with Glendening cable master and battery chargers (2 for services and 2 for engine batteries)
Centralized fire system Consilium
Electronic engine controls

NAVIGATION:

2 x Radar open array antenna 64 miles
GPS antenna
3 displays for navigation in wheel house Simrad Evo 2 and other Simrad Evo 3 for radar, plotter, depth etc.
Display Navionics for navigating on flybridge helm station
2 displays Boeing 16" computer for onboard management, doors, grey, black water, alarms etc
Autopilot AP50 with repeater on fly helm and emergency autopilot Simrad FU50
Radio VHF Sailor RT5022 DSC
Radio VHF onda corta HC4500B
Radio VHF Simrad HS100 DSC
Tridata Depth
Wind indicator
Rudder angle indicator
Simrad HS52 compass gyroscopic
CCTV display at helm with moveable camera at stern and cameras in engine room and garage
Navtex nav7 mc Murdo
AIS
Eplrb

AUDIO VISUAL:

Upgraded WIFI system supplying sound to saloon, aft deck, upper deck and sun deck through Bluetooth
Satellite TV antenna Tracvision KVH
Connections for sat antenna in cabins (no decoders)
Stereo radio CD Bose in saloon with speakers in saloon, aft deck, upper deck and main cabin
Stereo radio CD Bose in upper deck cabin with speakers in cabin, upper deck and sun deck
TV Smart 42" LG flat screen with electric raising device in saloon
TV Smart flat screen in main cabin and cabin on upper deck

Disclaimer:

Brokers present the particulars of this Vessel in good faith; however, they cannot guarantee or warrant the accuracy of this information, nor do they provide any assurances regarding the Vessel's condition. Images of the Vessel may be sourced from a catalogue. This document shall not, under any circumstances, be deemed a contractual term.

2007 JADE YACHTS BANDIDO 90' – M/Y BANDIDO

SPECIFICATION (continued):

TV Smart flat screen connected to boats wifi in crew mess

DOMESTIC:

Fridge x2 Siemens

Freezer Siemens

Ceramic Siemens 90cm hob with extractor Oven and micro wave oven Siemens

Dishwasher Bosch

Cutlery, plates, glasses various types etc. full set Set of plates, glasses and cutlery

Washing machine in crew mess

Drier in wetbar on sun deck

Wet bar on fly with sink, wine fridge and freezer

TENDER(S) & TOYS:

Tender Williams 385 Jet in aft garage

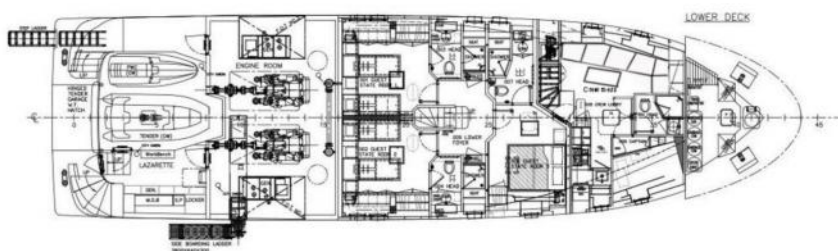
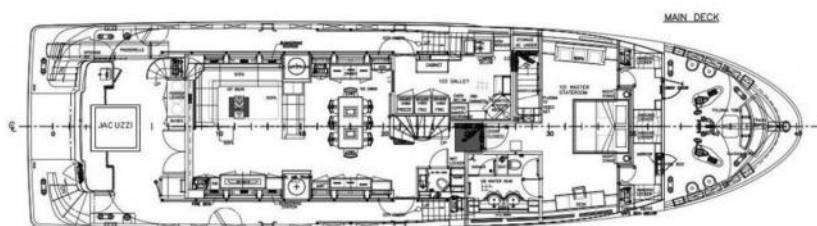
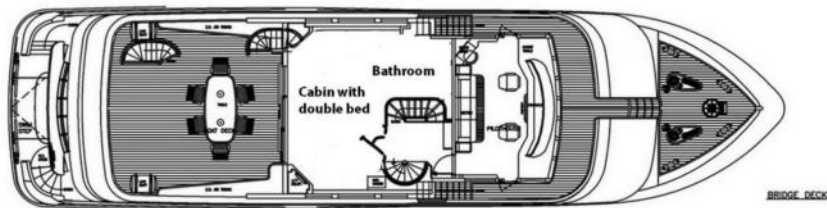
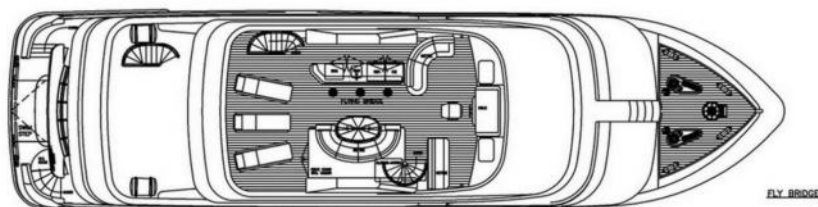
Jet ski Seadoo 300 RXP in aft garage

Disclaimer:

Brokers present the particulars of this Vessel in good faith; however, they cannot guarantee or warrant the accuracy of this information, nor do they provide any assurances regarding the Vessel's condition. Images of the Vessel may be sourced from a catalogue. This document shall not, under any circumstances, be deemed a contractual term.

2007 JADE YACHTS BANDIDO 90' – M/Y BANDIDO

LAYOUT:



Disclaimer:

Brokers present the particulars of this Vessel in good faith; however, they cannot guarantee or warrant the accuracy of this information, nor do they provide any assurances regarding the Vessel's condition. Images of the Vessel may be sourced from a catalogue. This document shall not, under any circumstances, be deemed a contractual term.